



OUR GLOBAL  
COMPETENCE  
CENTRES

 APOLLO DISPLAY  
TECHNOLOGIES



 DISTEC



 DISPLAY  
TECHNOLOGY



# Datasheet

## Disea

NK !H\$' ) A @!\$' D

ÖÖÉí ÈÈÈ

# PRODUCT SPECIFICATIONS

For Customer: \_\_\_\_\_

: APPROVAL FOR SPECIFICATION

Customer Model No. \_\_\_\_\_

: APPROVAL FOR SAMPLE

Module No.: ZW-T035MLH-03P

Date : 2014-10-07

## Table of Contents

No.	Item	Page
1	Cover Sheet(Table of Contents)	
2	Revision Record	
3	General Specifications	
4	Outline Drawing	
5	Absolute Maximum Ratings	
6	Electrical Specifications and Instruction Code	
7	Optical Characteristics	
8	Reliability Test Items and Criteria	
9	Precautions for Use of LCD Modules	

## For Customer's Acceptance:

Approved By	Comment

PREPARED	CHECKED	VERIFIED BY QA DEPT	VERIFIED BY R&D DEPT
John	Techshu		Stone

## 2. Revision Record

Date	Rev.No.	Page	Revision Items	Prepared
2013-6-3	V0		The first release	Stone
2013-6-27	V1		Change the TP	Wuliyun
2013-7-31	V2		Update the viewing angle	Wuliyun
2013-08-15	V3		Update optical characterist	Stone
2013-09-27	V4		Update the pin assignment	Wuliyun
2014-04-16	V5		Update Maximum Rating	ZHP
2014-06-03	V6		Change the format	ZHP
2014-07-29	V7		Update the touch pin definition	ZHP
2014-10-07	V8		Update interface signal in page 8	ZHP

### 3. General Specifications

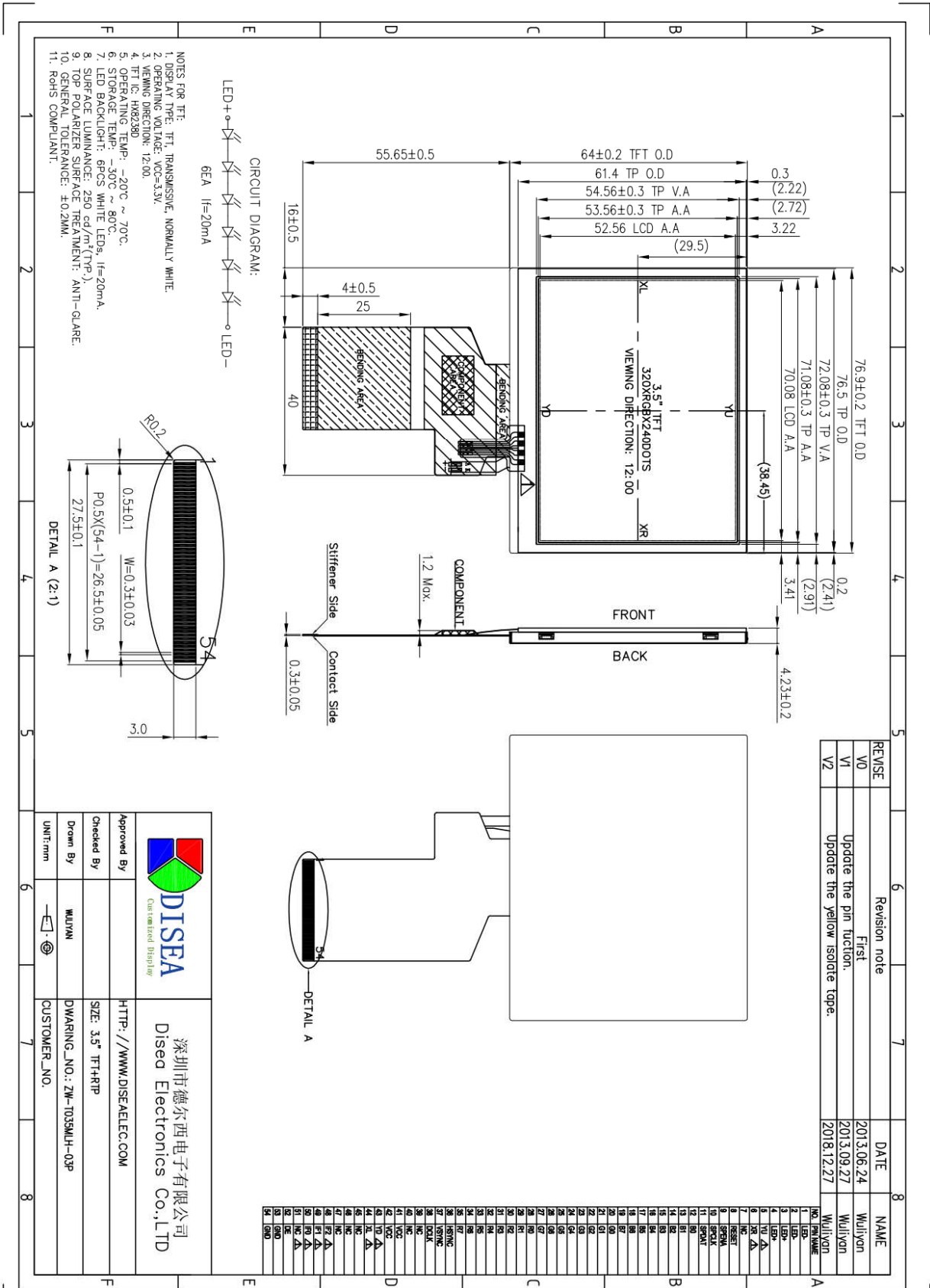
ZW-T035MLH-03P is a TFT-LCD module. It is composed of a TFT-LCD panel, driver IC, FPC, RTP, a back light unit. The 3.5" display area contains 320 x 240 pixels and can display up to 16.7M colors. This product accords with RoHS environmental criterion.

Item	Contents	Unit	Note
LCD Type	TFT	-	
Display color	16.7M		
Viewing Direction	12:00	O'Clock	
Grey inversion Direcrion	6:00	O'Clock	
Operating temperature	-20~+70	°C	
Storage temperature	-30~+80	°C	
Module size	76.9x64.0x4.23	mm	
Active Area(W×H)	70.08×52.56	mm	
Number of Dots	320×RGB×240	dots	
Controller	HX8238D	-	
Power Supply Voltage	3.3	V	
Backlight	6-LEDs (white)	pcs	
Weight	---	g	
Interface	24-BIT RGB	-	

Note 1: Color tune is slightly changed by temperature and driving voltage.

Note 2: Without FPC and Solder.

## 4.Outline.Drawing



## 5. Absolute Maximum Ratings( $T_a=25^\circ\text{C}$ )

### 5.1 Electrical Absolute Maximum Ratings.( $V_{SS}=0\text{V}$ , $T_a=25^\circ\text{C}$ )

Item	Symbol	Min.	Max.	Unit	Note
Power Supply Voltage	$V_{CC}$	-0.3	3.6	V	1, 2
Logic Signal Input /Output Voltage	$V_{IOVCC}$	-0.3	$V_{CC}+0.5$	V	

Notes:

1. If the module is above these absolute maximum ratings. It may become permanently damaged. Using the module within the following electrical characteristic conditions are also exceeded, the module will malfunction and cause poor reliability.
2.  $V_{CC} > V_{SS}$  must be maintained.
3. Please be sure users are grounded when handing LCD Module.

### 5.2 Environmental Absolute Maximum Ratings.

Item	Storage		Operating		Note
	MIN.	MAX.	MIN.	MAX.	
Ambient Temperature	$-30^\circ\text{C}$	$80^\circ\text{C}$	$-20^\circ\text{C}$	$70^\circ\text{C}$	1,2
Humidity	-	-	-	-	3

1. The response time will become lower when operated at low temperature.
2. Background color changes slightly depending on ambient temperature.  
*The phenomenon is reversible.*
3.  $T_a < 40^\circ\text{C}$ : 85%RH MAX.

$T_a \geq 40^\circ\text{C}$ : Absolute humidity must be lower than the humidity of 85%RH at  $40^\circ\text{C}$ .

## 6. Electrical Specifications and Instruction Code

### 6.1 Electrical characteristics ( $V_{SS}=0V, T_a=25^\circ C$ )

Parameter	Symbol	Condition	Min	Typ	Max	Unit	Note	
Power supply	VCC	Ta=25°C	3.0	3.3	3.6	V		
Input voltage	'H'	V <sub>IH</sub>	V <sub>CC</sub> =2.8V	0.8V <sub>CC</sub>	-	V <sub>CC</sub>	V	
	'L'	V <sub>IL</sub>	V <sub>CC</sub> =2.8V	0	-	0.2V <sub>CC</sub>	V	
Current Consumption	I <sub>CC1</sub>	Normal mode	-	20	30	mA	1	
	I <sub>CC2</sub>	Sleep mode	-	0.05	0.1	mA	1	
Clock Frequency	fCLK	-	-	9	12	MHz		

Note:1: Tested in 1×1 chessboard pattern.



## 6.2 LED backlight specification (VSS=0V, Ta=25 °C)

Item	Symbol	Condition	Min	Typ	Max	Unit	Note
Supply voltage	Vf	If=20mA	17	18	20	V	1
Uniformity	▲Bp	If=20mA	80			%	
Luminance for LCD (with RTP)	Lv	If=20mA	200	250		Cd/m <sup>2</sup>	
LED life time	-	If=20mA	20k	30k		Hours	

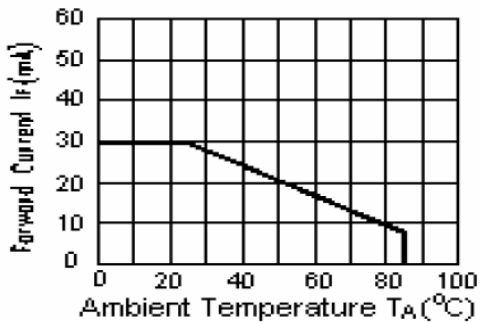
Note:

1: VLED=VLED(+)-VLED(-).

2: The current of LED is 20mA.

A LED drive in constant current mode is recommended.

3: LED power consumption is around 0.297W



I<sub>LED</sub> VS TEMP

## 6.3 Interface signals

Pin No.	Symbol	I/O	Function
1-2	LED_K	P	Backlight LED Ground
3-4	LED_A	P	Backlight LED Power
5	YD	I	Touch Pin
6	XR	I	Touch Pin
7	NC		No connection
8	RESET	I	Reset pin, This is an active low signal
9	SPENA	I	SPI interface Data Enable Signal
10	SPCLK	I	SPI interface Clock
11	SPDAT	I	SPI interface Data
12-19	B0-B7	I	Blue Data Bit
20-27	G0-G7	I	Green Data Bit
28-35	R0-R7	I	Red Data Bit / DX0-DX7
36	HSYNC	I	Horizontal Sync Input
37	VSYNC	I	Vertical Sync Input
38	DCLK	I	Dot Data Clock
39-40	NC		No connection
41-42	VCC	P	Digital Power
43	YU	I	Touch Pin
44	XL	I	Touch Pin
45-47	NC		No connection
48	SEL2(IF2)	I	Control the input data format(Note1)
49	SEL1(IF1)	I	Control the input data format(Note1)
50	SEL0(IF0)	I	Control the input data format(Note1)
51	NC		No connection
52	DE	I	Data Enable Input
53-54	GND	P	Ground

### NOTE1:↵

**SEL2-0:** Define the input interface mode.

SEL2	SEL1	SEL0	Format	Operating Frequency
0	0	0	Parallel-RGB data format (only support stripe type color filter)	6.5MHz
0	0	1	Serial-RGB data format	19.5MHz
0	1	0	CCIR 656 data format (640RGB)	24.54MHz
0	1	1	CCIR 656 data format (720RGB)	27MHz
1	0	0	YUV mode A data format (Cr-Y-Cb-Y)	24.54MHz
1	0	1	YUV mode A data format (Cr-Y-Cb-Y)	27MHz
1	1	0	YUV mode B data format (Cb-Y-Cr-Y)	27MHz
1	1	1	YUV mode B data format (Cb-Y-Cr-Y)	24.54MHz

## 7. Optical Characteristics

Item	Symbol	Condition	Min.	Typ.	Max.	Unit	Note
Brightness (With TP)	Bp	$\theta=0^\circ$ $\Phi=0^\circ$	200	250	-	Cd/m <sup>2</sup>	1
Uniformity	$\triangle Bp$		75	80	-	%	1,2
Viewing Angle	3:00	Cr $\geq$ 10	50	60	-	Deg	3
	6:00		35	45	-		
	9:00		50	60	-		
	12:00		50	60	-		
Contrast Ratio	Cr	$\theta=0^\circ$ $\Phi=0^\circ$	300	500	-	-	4
Response Time	T <sub>r</sub>		-	25	-	ms	5
	T <sub>f</sub>		-	25	-	ms	
Color of CIE Coordinate	W	x	0.254	0.304	0.354	-	1,6
		y	0.289	0.339	0.389	-	
		Y	-	-	-	-	
	R	x	0.551	0.601	0.651	-	
		y	0.274	0.324	0.374	-	
		Y	-	-	-	-	
	G	x	0.251	0.301	0.351	-	
		y	0.517	0.567	0.617	-	
		Y	-	-	-	-	
	B	x	0.093	0.143	0.193	-	
		y	0.124	0.174	0.224	-	
		Y	-	-	-	-	
NTSC Ratio	S	50	60	-	%		

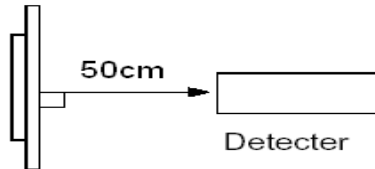
Note: The parameter is slightly changed by temperature, driving voltage and materiel

Note 1: The data are measured after LEDs are turned on for 5 minutes. LCM displays full white. The brightness is the average value of 9 measured spots. Measurement equipment PR-705 ( $\Phi$ 8mm)

**Measuring condition:**

- Measuring surroundings: Dark room.
- Measuring temperature:  $T_a=25\text{ }^\circ\text{C}$ .
- Adjust operating voltage to get optimum contrast at the center of the display.

Measured value at the center point of LCD panel after more than 5 minutes while backlight turning on.

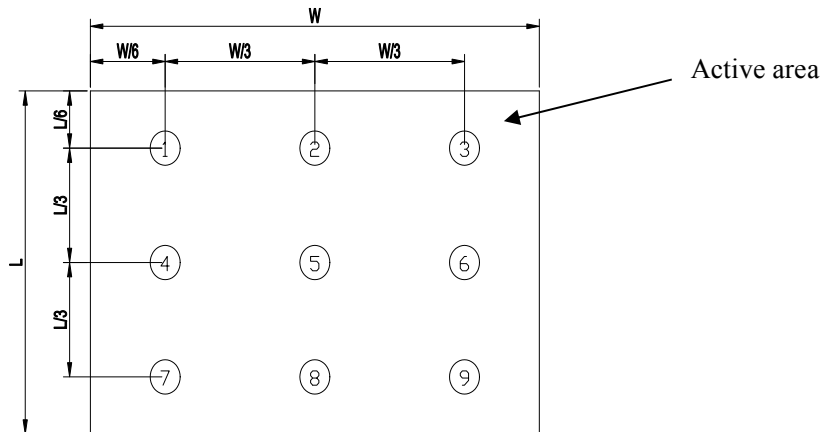


Note 2: The luminance uniformity is calculated by using following formula.

$$\Delta B_p = B_p (\text{Min.}) / B_p (\text{Max.}) \times 100 (\%)$$

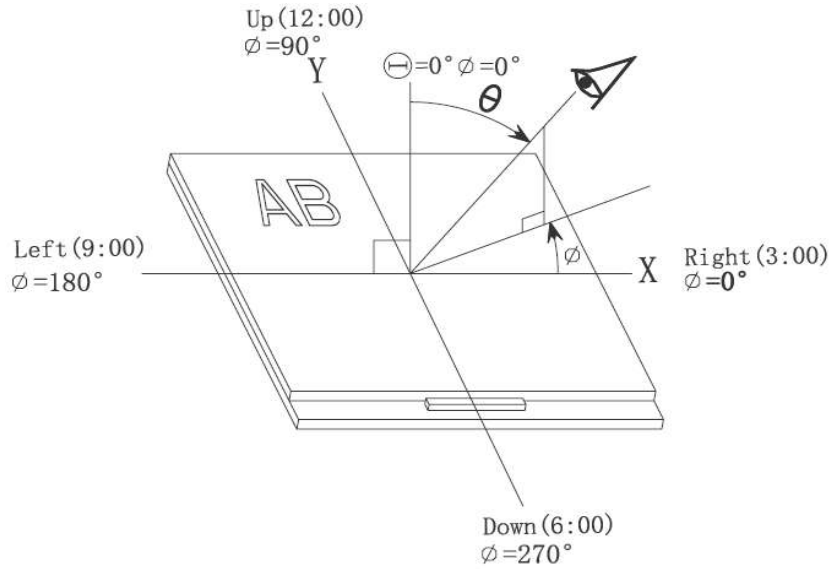
$B_p (\text{Max.})$  = Maximum brightness in 9 measured spots

$B_p (\text{Min.})$  = Minimum brightness in 9 measured spots.

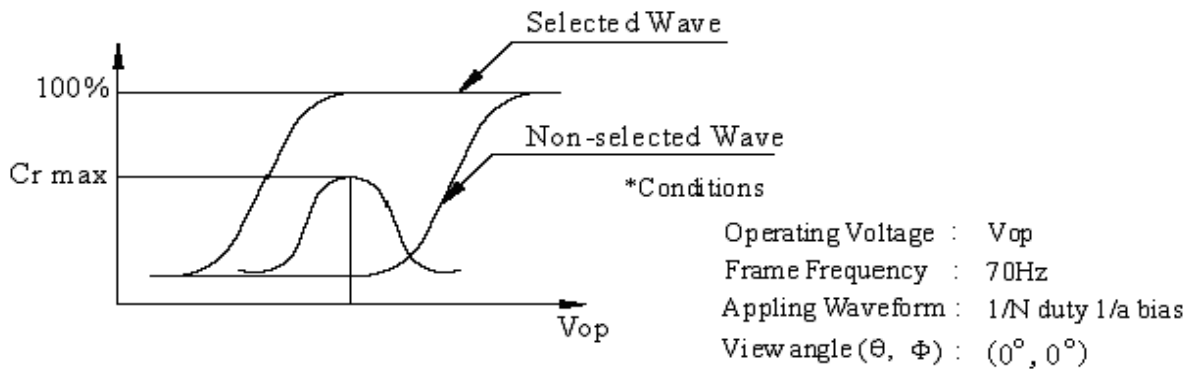


Note 3: The definition of viewing angle:

Refer to the graph below marked by  $\vartheta$  and  $\Phi$



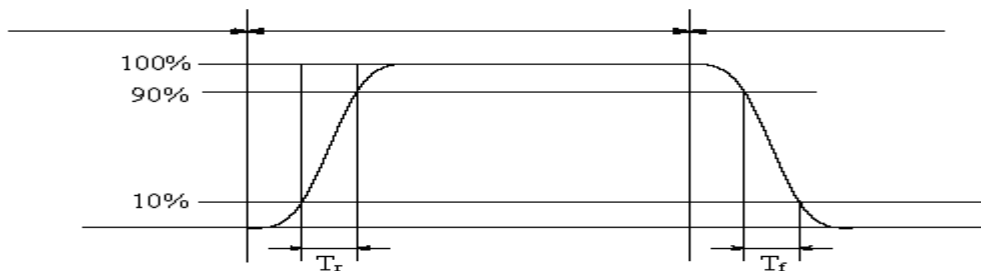
Note 4: Definition of contrast ratio.( Test LCD using DMS501)



$$\text{Contrast ratio}(Cr) = \frac{\text{Brightness of selected dots}}{\text{Brightness of non-selected dots}}$$

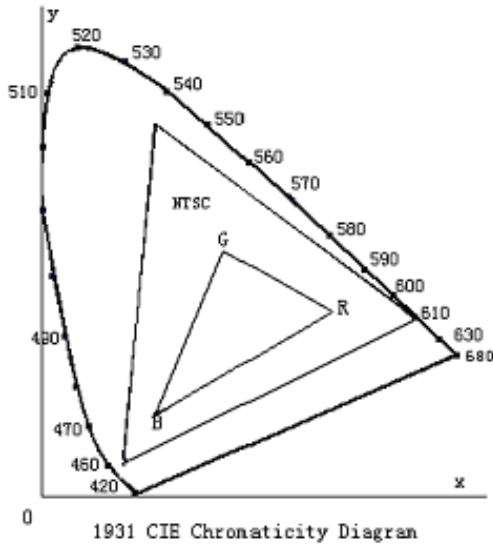
Note 5: Definition of Response time. (Test LCD using DMS501):

The output signals of photo detector are measured when the input signals are changed from "black" to "white"(falling time) and from "white" to "black"(rising time), respectively. The response time is defined as the time interval between the 10% and 90% of amplitudes.Refer to figure as below.



The definition of response time

Note 6: Definition of Color of CIE Coordinate and NTSC Ratio.

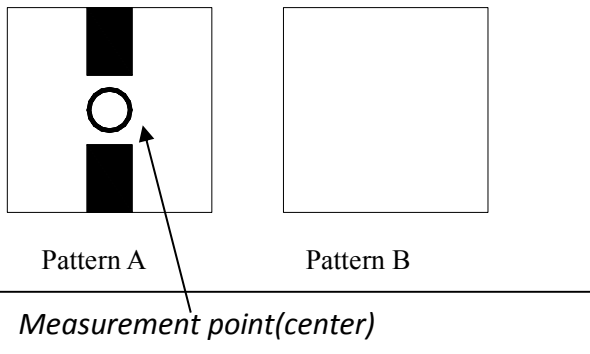


Color gamut:

$$S = \frac{\text{area of RGB triangle}}{\text{area of NTSC triangle}} \times 100\%$$

Note 7: Definition of cross talk.

Cross talk ratio(%) =  $\frac{|\text{pattern A Brightness} - \text{pattern B Brightness}|}{\text{pattern A Brightness}} \times 100$



Electric volume value = 3F+/-3Hex

## 8. Reliability Test Items and Criteria

No	Test Item	Test condition	Criterion
1	High Temperature Storage	80°C±2°C 96H Restore 2H at 25°C Power off	1. After testing, cosmetic and electrical defects should not happen. 2. Total current consumption should not be more than twice of initial value.
2	Low Temperature Storage	-30°C±2°C 96H Restore 2H at 25°C Power off	
3	High Temperature Operation	70°C±2°C 96H Restore 2H at 25°C Power on	
4	Low Temperature Operation	-20°C±2°C 96H Restore 4H at 25°C Power on	
5	High Temperature/Humidity Operation	60°C±2°C 90%RH 96H Power on	
6	Temperature Cycle	-30°C → 80°C 30min 5min 30min after 5 cycle, Restore 2H at 25°C Power off	
7	Vibration Test	10Hz~150Hz, 100m/s <sup>2</sup> , 120min	Not allowed cosmetic and electrical defects.
8	Shock Test	Half- sine wave, 300m/s <sup>2</sup> , 11ms	

Note: Operation: Supply 2.8V for logic system.

The inspection terms after reliability test, as below

ITEM	Inspection
Contrast	CR>50%
IDD	IDD<200%
Brightness	Brightness>60%
Color Tone	Color Tone+/-0,05

## **9. Precautions for Use of LCD Modules**

### **9.1 Handling Precautions**

9.1.1 *The display panel is made of glass. Do not subject it to a mechanical shock by dropping it from a high place, etc.*

9.1.2 *If the display panel is damaged and the liquid crystal substance inside it leaks out, be sure not to get any in your mouth, if the substance comes into contact with your skin or clothes, promptly wash it off using soap and water.*

9.1.3 *Do not apply excessive force to the display surface or the adjoining areas since this may cause the color tone to vary.*

9.1.4 *The polarizer covering the display surface of the LCD module is soft and easily scratched. Handle this polarizer carefully.*

9.1.5 *If the display surface is contaminated, breathe on the surface and gently wipe it with a soft dry cloth. If still not completely clear, moisten cloth with one of the following solvents:*

— Isopropyl alcohol                      — Ethyl alcohol

*Solvents other than those mentioned above may damage the polarizer. Especially, do not use the following:*

— Water                                      — Ketone                                      — Aromatic solvents

9.1.6 *Do not attempt to disassemble the LCD Module.*

9.1.7 *If the logic circuit power is off, do not apply the input signals.*

9.1.8 *To prevent destruction of the elements by static electricity, be careful to maintain an optimum work environment.*

*a. Be sure to ground the body when handling the LCD Modules.*

*b. Tools required for assembly, such as soldering irons, must be properly ground.*

*c. To reduce the amount of static electricity generated, do not conduct assembly and other work under dry conditions.*

*d. The LCD Module is coated with a film to protect the display surface. Be care when peeling off this protective film since static electricity may be generated.*



## **9.2 Storage precautions**

9.2.1 *When storing the LCD modules, avoid exposure to direct sunlight or to the light of fluorescent lamps.*

9.2.2 *The LCD modules should be stored under the storage temperature range. If the LCD modules will be stored for a long time, the recommend condition is:*

*Temperature :        0 °C ~ 40 °C*

*Relatively humidity: ≤80%*

9.2.3 *The LCD modules should be stored in the room without acid, alkali and harmful gas.*

**9.3 *The LCD modules should be no falling and violent shocking during transportation, and also should avoid excessive press, water, damp and sunshine.***

**END**

Our company network supports you worldwide with offices in Germany, Austria, Switzerland, the UK and the USA. For more information please contact:

## Headquarters

### Germany



#### FORTEC Elektronik AG

Augsburger Str. 2b  
82110 Germering

Phone: +49 89 894450-0  
E-Mail: [info@forteca.de](mailto:info@forteca.de)  
Internet: [www.forteca.de](http://www.forteca.de)

## Fortec Group Members

### Austria



#### Distec GmbH Office Vienna

Nuschinggasse 12  
1230 Wien

Phone: +43 1 8673492-0  
E-Mail: [info@distec.de](mailto:info@distec.de)  
Internet: [www.distec.de](http://www.distec.de)

### Germany



#### Distec GmbH

Augsburger Str. 2b  
82110 Germering

Phone: +49 89 894363-0  
E-Mail: [info@distec.de](mailto:info@distec.de)  
Internet: [www.distec.de](http://www.distec.de)

### Switzerland



#### ALTRAC AG

Bahnhofstraße 3  
5436 Würenlos

Phone: +41 44 7446111  
E-Mail: [info@altrac.ch](mailto:info@altrac.ch)  
Internet: [www.altrac.ch](http://www.altrac.ch)

### United Kingdom



#### Display Technology Ltd.

Osprey House, 1 Osprey Court  
Hichingbrooke Business Park  
Huntingdon, Cambridgeshire, PE29 6FN

Phone: +44 1480 411600  
E-Mail: [info@displaytechnology.co.uk](mailto:info@displaytechnology.co.uk)  
Internet: [www.displaytechnology.co.uk](http://www.displaytechnology.co.uk)

### USA



#### Apollo Display Technologies, Corp.

87 Raynor Avenue,  
Unit 1 Ronkonkoma,  
NY 11779

Phone: +1 631 5804360  
E-Mail: [info@apolloDisplays.com](mailto:info@apolloDisplays.com)  
Internet: [www.apolloDisplays.com](http://www.apolloDisplays.com)