



## SSD1393-A

**13.9" Resizing LCD, Brightness 600nits, LED backlight, 1280x398 ultra wide aspect ratio 16:5**

SSD1393-A is an innovative ultra-wide, LED backlight LCD display. It provides LCD panel with specific ratios for digital signage, public transportation, exhibition hall, department store, vending machine and industrial applications.

### Key Features

- Resizing LCD
- Ultra Wide Screen (16 : 5)
- LED Backlight
- Brightness 600nits
- Low Power Consumption
- High Uniformity



## Specifications

V1

<b>Model No.</b>	<b>SSD1393-A</b>
<b>Description</b>	13.9" Resizing LCD Module, 600nits, LED backlight, 1280x398
<b>Display Area</b>	337.92x105.14 mm
<b>Brightness</b>	600nits
<b>Resolution</b>	1280 x 398
<b>Aspect Ratio</b>	16 : 5
<b>Contrast Ratio</b>	700:1
<b>Pixel Pitch (mm)</b>	0.264 x 0.264
<b>Viewing Angle</b>	170°(H), 160°(V)
<b>Display Colors</b>	16.7M
<b>Response Time (Typical)</b>	30 ms
<b>Power Consumption</b>	21W
<b>Dimensions (mm)</b>	360.9x132.5x48.6
<b>Weight (Net)</b>	1.5kg
<b>LED Driving Board</b>	On module
<b>Control Board (Optional)</b>	<input type="checkbox"/> AD6038GD
<input type="checkbox"/> AD2662GD	VGA+DVI
<b>F / R Control Button</b>	<input type="checkbox"/> 4 Key
<input type="checkbox"/> 4 Key	Power Switch, Menu, Select (+,-),
<b>OSD Menu</b>	Brightness, Contrast, H/V Position, Color, Phase, Clock...
<b>Optional</b>	<input type="checkbox"/> AOT <input type="checkbox"/> Touch Screen

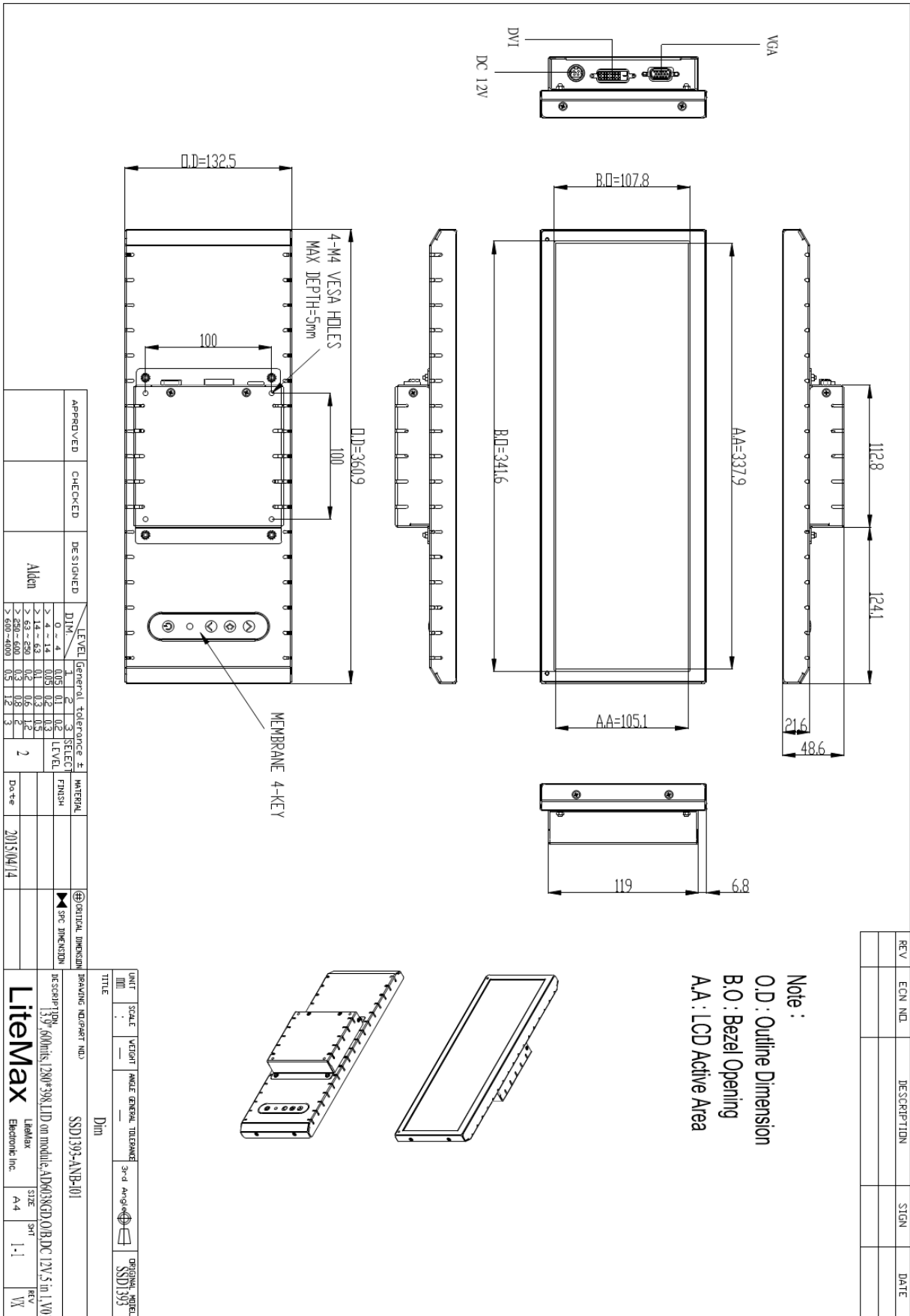
*Specifications are subject to change without notice.*

*All brands or product names are trademarks or registered trademarks of their respective companies.*

**SSD= Panel+ LED Driving Board + AD Board**



Mechanical Drawing





### Ordering Information

Part Number	Description
<b>SSD1393-ANB-I01</b>	13.9",600nits,1280*398,LID on module,AD6038GD,O/B,DC12V,5in1,V01

### Optional Accessories

Part Number	Description
<b>840612051210</b>	ADAPTER,AC/DC,12V/5.4A,65W,Atech OEM A065112-TDx.4P SLIDING CAP,P
<b>810618301010</b>	CABLE.POWER.AC.1830mm USA type
<b>810618301090</b>	CABLE,POWER,AC,1830mm Europe type
<b>810618301050</b>	CABLE.POWER.AC.1830mm UK type
<b>810618301170</b>	CABLE.POWER,AC,1830mm Australia type
<b>810618301030</b>	CABLE.POWER.AC.1830mm Japan type