



SSD1033

9.98" Resizing LCD Display, Brightness is 700 nits, LED backlight, 800x200 ultra wide aspect ratio 16:3

SSD1033 is an innovative ultra-wide, LED backlight LCD module. It provides LCD panel with specific ratios for digital signage, public transportation, exhibition hall, department store, and vending machine applications.

Key Features

- Resizing LCD
- Ultra Wide Screen (16 : 3)
- LED Backlight
- High Brightness 700nits
- Low Power Consumption
- High Uniformity
- Wide Dimming



Specifications

V1

Model No.	SSD1033
Description	9.98" Resizing LCD Display, 700nits, LED backlight, 800x200
Display Area	246.6x 61.5 mm
Brightness	700nits
Resolution	800 x 200
Aspect Ratio	16 : 3
Contrast Ratio	600:1
Pixel Pitch (mm)	0.3075 x 0.3075
Viewing Angle	160°(H), 135°(V)
Display Colors	262K
Response Time (Typical)	35 ms
Power Consumption	9.6W
Dimensions (mm)	291x106.2x46.2mm
Weight (Net)	1.2Kg
LED Driving Board	On module
Control Board (Optional)	<input type="checkbox"/> AD2662GVA <input type="checkbox"/> AD2662GVA + (DVI/ RS232)
<input type="checkbox"/> AD2662GV	VGA+S-Video+AV
<input type="checkbox"/> AD2662GVA	VGA+S-Video+AV+Audio
<input type="checkbox"/> AD2662GVA + (DVI/ RS232)	VGA+S-Video+AV+Audio (Optional DVI/ RS232)
F / R Control Button	<input type="checkbox"/> 4 Key
<input type="checkbox"/> 4 Key	Power Switch, Menu, Select (+,-),
OSD Menu	Brightness, Contrast, H/V Position, Color, Phase, Clock...
Optional	<input type="checkbox"/> AOT <input type="checkbox"/> Touch Screen

Specifications are subject to change without notice.

All brands or product names are trademarks or registered trademarks of their respective companies.

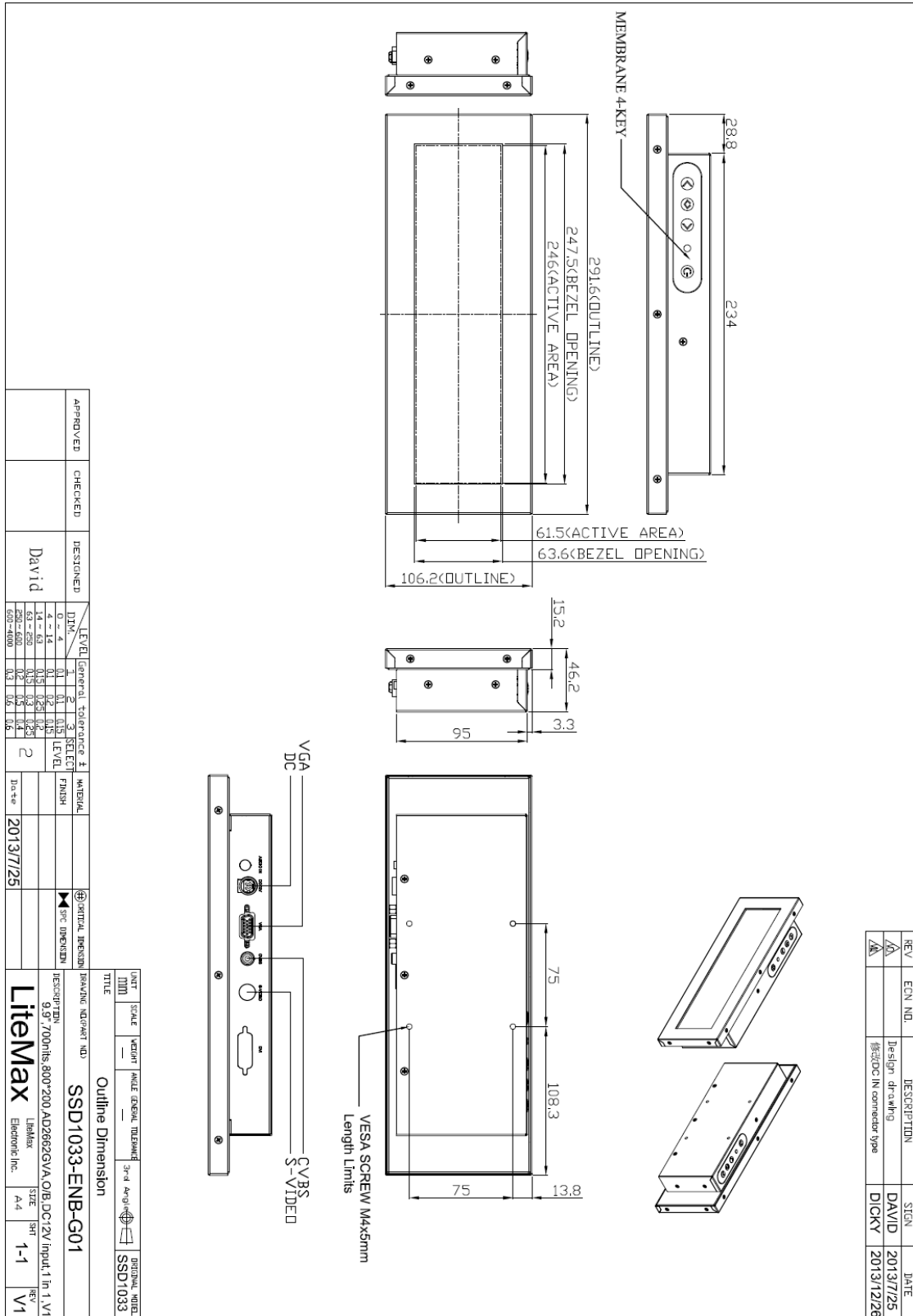
SSD= Panel+ LED Driving Board + Control Board



Mechanical Drawing

Outline Dimensions

Unit: mm





Ordering Information

Part Number	Description
SSD1033-ENB-G01	9.9",700nits,800*200,AD2662GV,O/B,DC12V input,1 in 1,V1

Optional Accessories

Part Number	Description
840612031100	ADAPTER.12V.3.33A.40W,PAA040F,P
810618301010	CABLE.POWER.AC.1830mm USA type
810618301090	CABLE.POWER.AC.1830mm Europe type
810618301050	CABLE.POWER.AC.1830mm UK type
810618301170	CABLE.POWER.AC.1830mm Australia type
810618301030	CABLE.POWER.AC.1830mm Japan type