



Manual

SmartLED Rover

Configuration Software for SmartLED Controllers

Version 0.1

11.03.2015

The information contained in this document has been carefully researched and is, to the best of our knowledge, accurate. However, we assume no liability for any product failures or damages, immediate or consequential, resulting from the use of the information provided herein. Our products are not intended for use in systems in which failures of product could result in personal injury. All trademarks mentioned herein are property of their respective owners. All specifications are subject to change without notice.



Table of Contents

1	Revision History	3
2	General Description	4
2.1	Supported Features	4
2.1.1	General	4
2.1.2	Input	4
2.1.3	Output	4
2.2	Supported Devices.....	4
2.3	Supported Operating Systems	4
2.4	Required Hardware	4
2.5	Graphical User Interface.....	5
3	News and Updates	9



1 Revision History

Date	Rev.No.	Description	Page
11.03.2015	0.1	First draft	All



2 General Description

The SmartLED controllers are devices to drive LED backlights of TFT displays. These controllers can be configured by using the SmartLEDOver Windows software.

2.1 Supported Features

2.1.1 General

- Read firmware and configuration from SmartLED controller and from file
- Write firmware and configuration to SmartLED controller and to file

2.1.2 Input

- Backlight control via analog voltage or PWM
- Input analog voltage for minimal and maximal luminance
- Select pin for backlight enable signal (standard or GPIO)
- Luminance input / output transfer characteristic

2.1.3 Output

- PWM frequency
- PWM duty cycle for minimal and maximal luminance
- Active LED outputs (1 to 4 channels)
- LED current per channel
- Support for two different operating modes – standard and night mode (NVIS)

2.2 Supported Devices

- SmartLED-II
- SmartLED-III
- SmartLED-IV

2.3 Supported Operating Systems

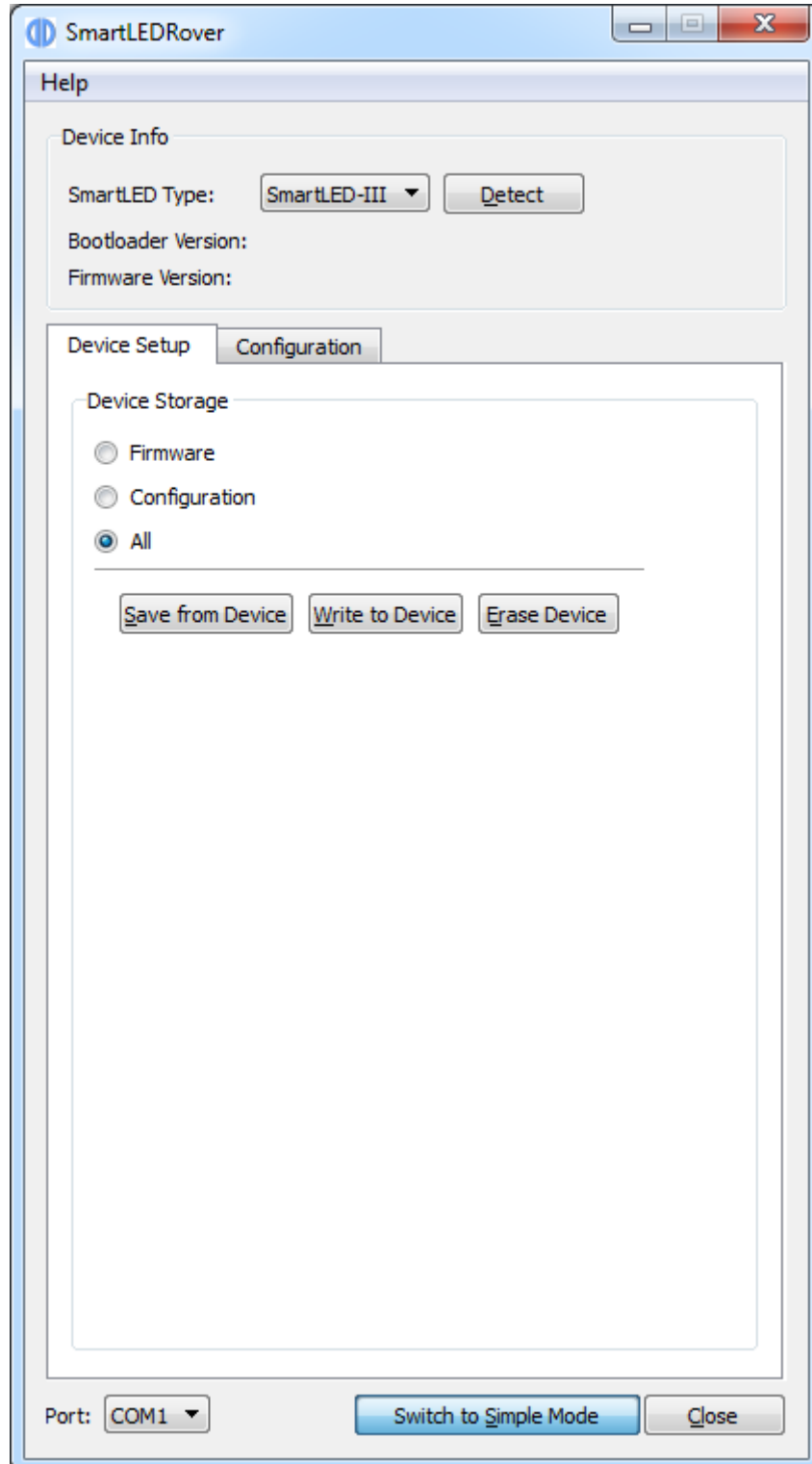
- Windows 7
- Windows 8
- Windows 8.1

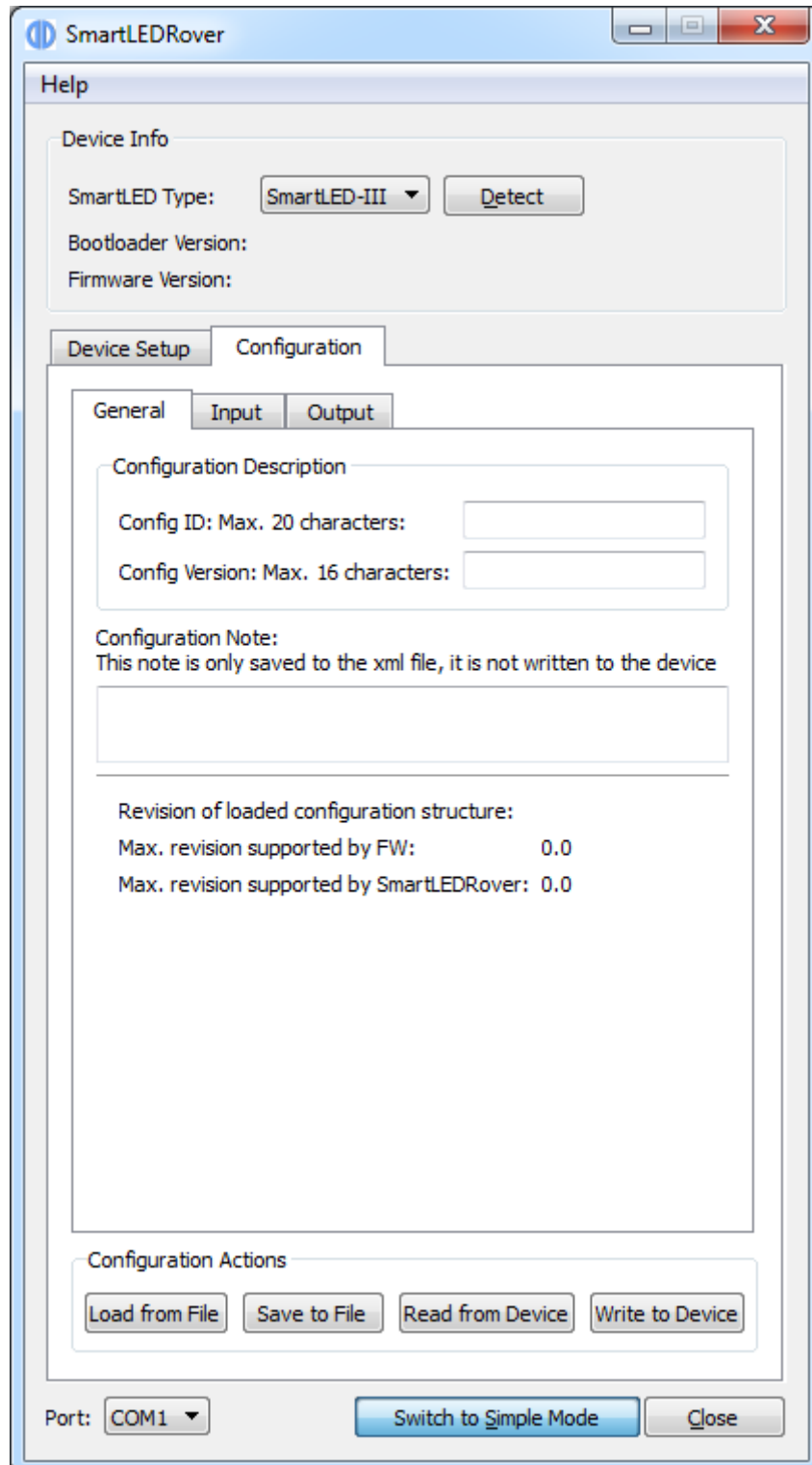
2.4 Required Hardware

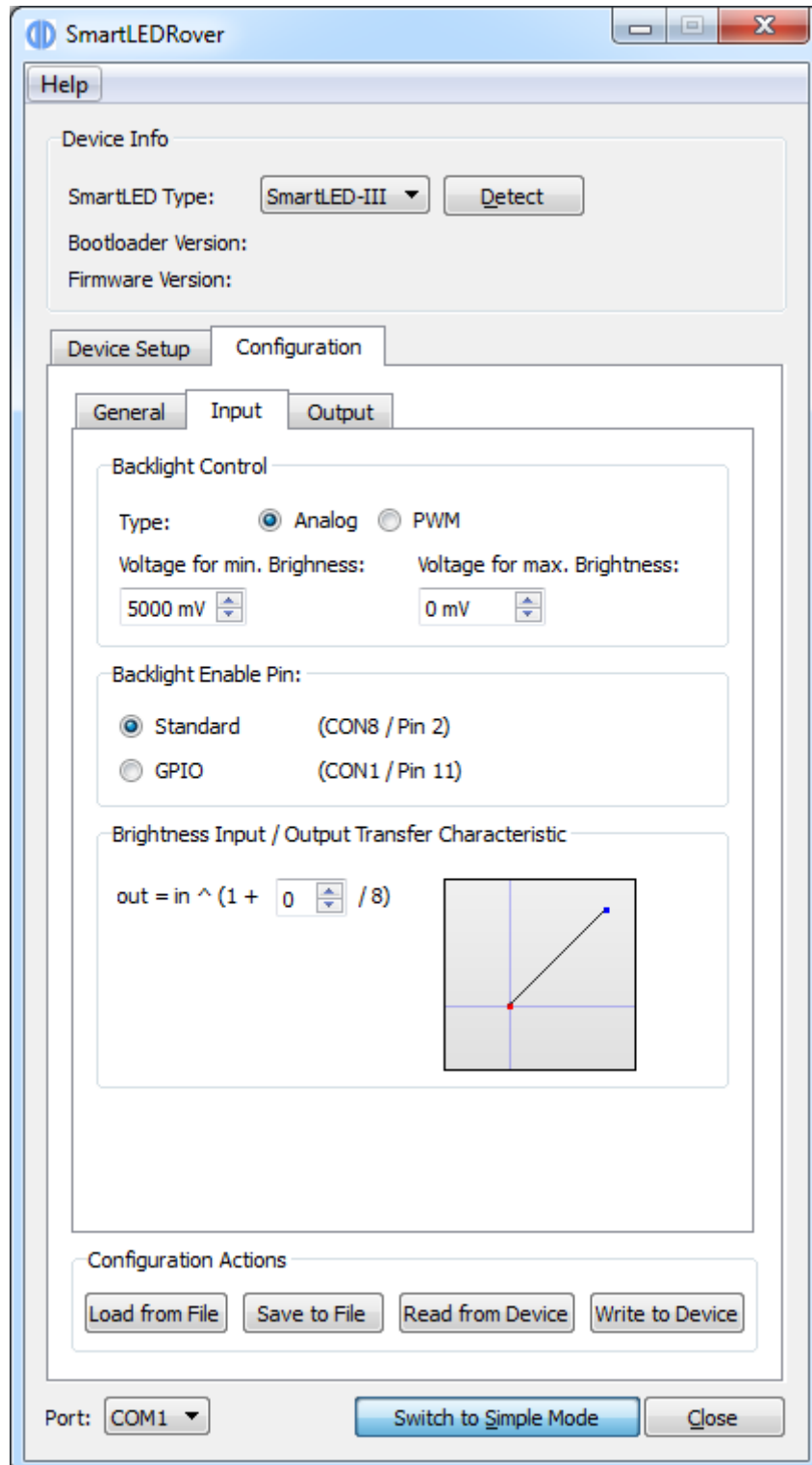
- Windows PC with COM port (RS-232)
- RS-232 adapter with cable
 - ZU-02-370 IF370-00-R10programingadap.Pris./Art.NET
 - KA-30-101 Cable Service/Debug ArtistaNET/Pris 80cm

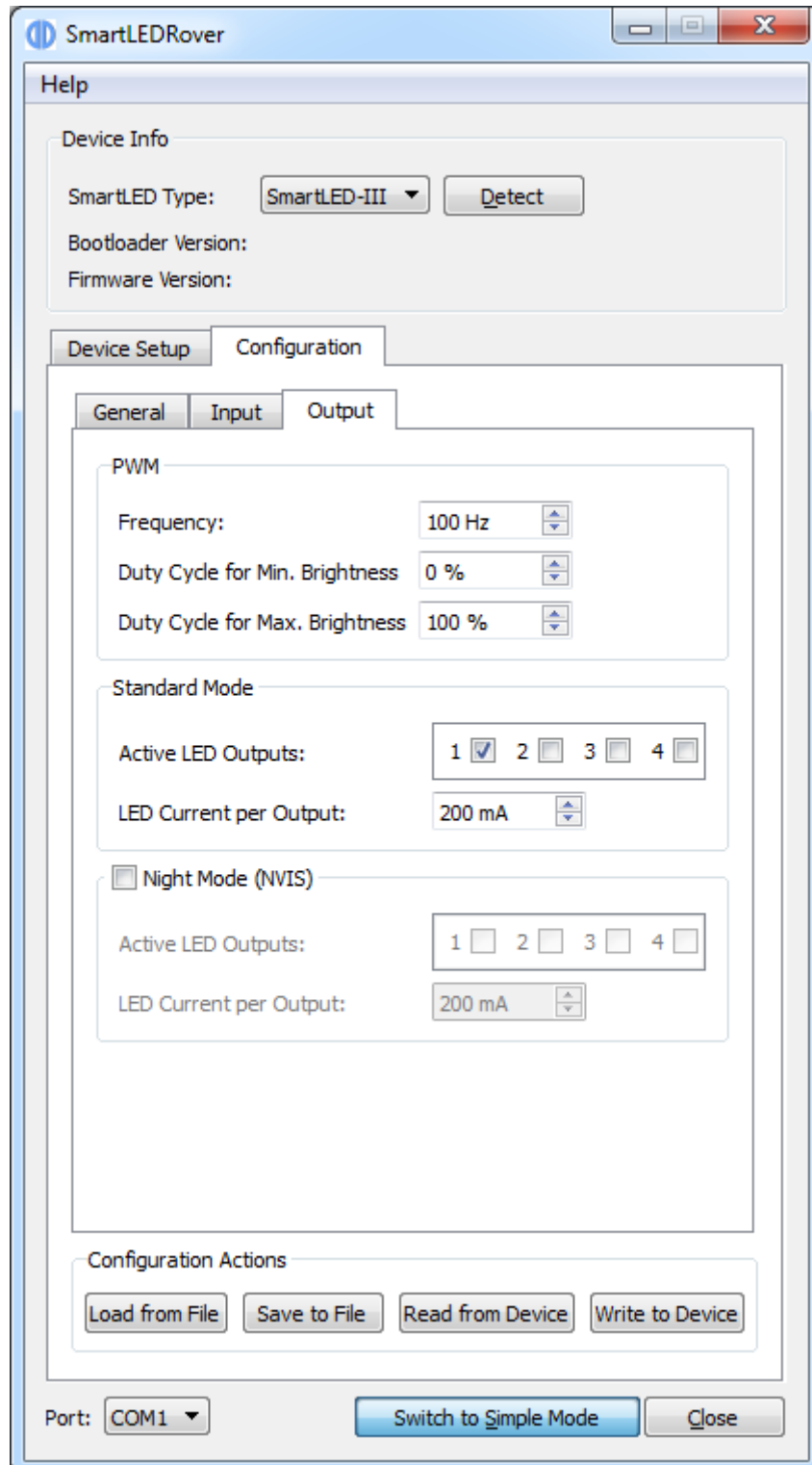


2.5 Graphical User Interface











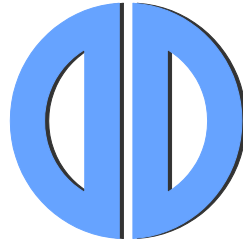
3 News and Updates

The latest version of documents, drivers and software packages can be found at:

German Site <http://www.datadisplay-group.de/service/downloads/>

English Site <http://www.datadisplay-group.com/service/downloads/>

Our company network supports you worldwide with offices in Germany, Great Britain, Italy, Turkey and the USA. For more information please contact:



DATA DISPLAY GROUP

Distec GmbH

Augsburger Str. 2b
82110 Germering
Germany

Phone: +49 (0)89 / 89 43 63-0
Fax: +49 (0)89 / 89 43 63-131
E-Mail: info@datadisplay-group.de
Internet: www.datadisplay-group.de

Display Technology Ltd.

5 The Oaks Business Village
Revenge Road, Lordswood
Chatham, Kent, ME5 8LF
United Kingdom

Phone: +44 (0)1634 / 67 27 55
Fax: +44 (0)1634 / 67 27 54
E-Mail: info@datadisplay-group.co.uk
Internet: www.datadisplay-group.co.uk

Apollo Display Technologies, Corp.

87 Raynor Avenue, Unit 1 Ronkonkoma, NY
11779

United States of America

Phone: +1 631 / 580-43 60
Fax: +1 631 / 580-43 70
E-Mail: info@datadisplay-group.com
Internet: www.datadisplay-group.com

Sales Partner:

REM Italy s.a.s.

di Michieletto Flavio & C.
Via Obbia Bassa, 10
I-35010 Trebaseleghe (PD)
Italy
Phone: +39 335 521 37 89
E-Mail: info@remitaly.com
Internet: www.remitaly.com

Sales Partner:

DATA DISPLAY BİLİŞİM TEKNOLOJİLERİ İÇ VE DIŞ TİCARET LİMİTED ŞİRKETİ

Barbaros Mh Ak Zamabak Sk A Blok
D:143 Ataşehir/İstanbul
Turkey
Phone: +90 (0)216 / 688 04 68
Fax: +90 (0)216 / 688 04 69
E-Mail: info@data-display.com.tr
Internet: www.data-display.com.tr